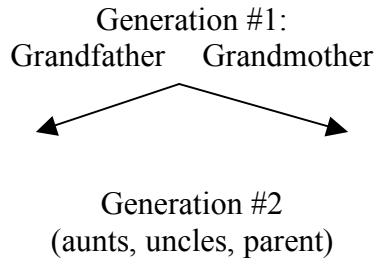


Name _____

Make a Sociological Family Tree

As you make the family tree, make note of social trends, such as: # of children (or remaining childless), marriage, divorce, remarriage, cohabitation, single parenthood, and living alone/remaining single. Other things to pay attention to: age of marriage and childbearing, educational attainment (intergenerational mobility), women in workforce, social class, interracial families, and gay/lesbian families. (You can make this as detailed or simple as you would like)

Maternal Side

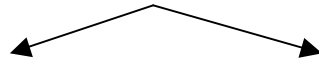


Generation #3
(cousins, siblings, you)

Generation #4
(cousins' children, your children, nieces, nephews)

Paternal Side

Generation #1:
Grandfather Grandmother



Generation #2
(aunts, uncles, parent)

Generation #3
(cousins, siblings, you)

Generation #4
(cousins' children, your children, nieces, nephews)

In what ways does your family (including yourself!) line up with social trends? Pay attention to changes from one generation to the next. In what ways do you diverge from trends? Use your readings and notes from lecture to identify the trends.

Changing family patterns

Marriage:

Divorce:

Remarriage:

Cohabitation:

Single Parenthood:

Remaining Single / Living Alone:

of children (or remaining childless):

Age at marriage and childbearing:

Educational attainment:

Women in workforce:

Social class (intergenerational mobility):

Interracial families:

Gay/lesbian families:

Next, compare your answers with others in a group of three.